



Agile in Practice

½ Day Workshop

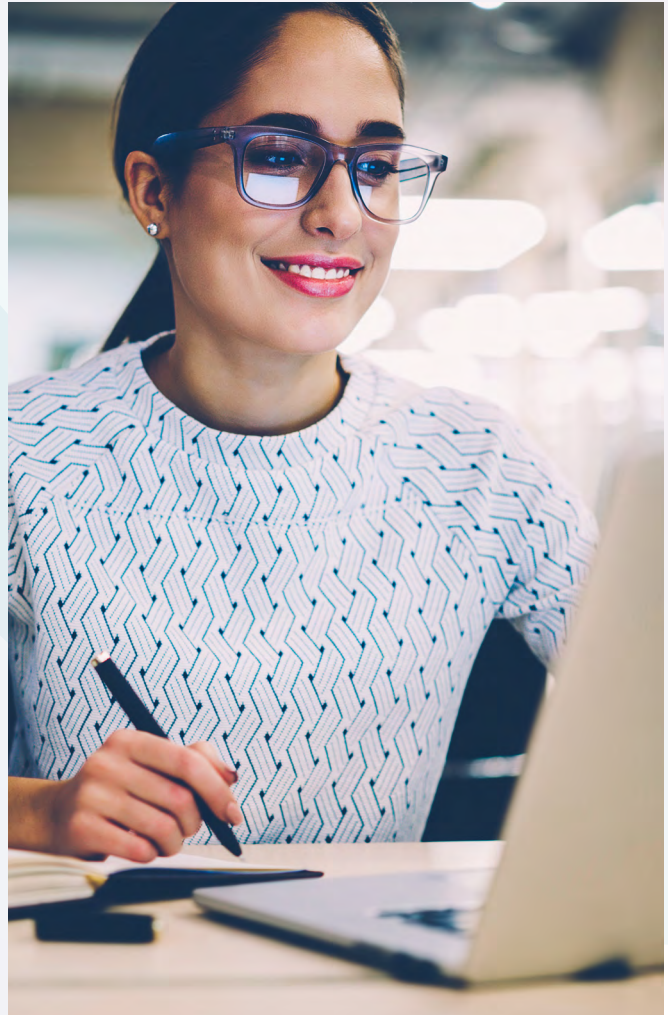


Overview

This ½ day workshop builds on the content in the agile course and is designed to help answer the key questions What Next - Now What?

Whilst the courses are focused on a specific syllabus to prepare for certifications, this workshop focuses on how to embed the learnings from those courses.

The workshop is very interactive and engaging and facilitated by PM-Partners Senior Agile coach. The coach will be at hand to answer those questions many individuals and teams ask when they get back to business as usual after attending a course.





Key Topics

Common topics covered:

- » Setting up for success
- » Cultural resistance
- » Estimating for real
- » Writing effective and compelling user stories
- » Decomposing epics
- » Prioritising when everything is a 'must have'
- » Measuring what matters
- » Reporting and governance to gain support



Course Delivery

Each participant will be asked to complete an on-line survey, using the PM-Partners Capability Hub, to determine how they are currently performing in an agile environment and to highlight any pain points.

At the start of the workshop, participants will identify their key challenges and vote, as a group, on the top 3 topics/challenges. The topics will then be explored, and solutions worked through, via coaching, group discussions, and interactive activities.

Workshops will be facilitated by one of our highly experienced agile coaches.



Who is this course for?

This workshop is designed for anyone who has completed any of the agile courses run by PM-Partners, such as:

- » Agile Fundamentals
- » AgilePM® or AgileBA®
- » PRINCE2 Agile®
- » Scrum Master Certified (SMC™) or Scrum Product Owner Certified (SPOC™)
- » Scaled Agile Framework® (SAFe®) courses

Whilst the above courses are not direct pre-requisites, participants would find it beneficial to have attended one of the courses listed above (or similar).

Professional Development Units (PDUs)

Participants who have been awarded the Project Management Professional (PMP)® credential by the Project Management Institute (PMI)® are eligible to earn **3 PDUs** for their participation in this course (3 Ways of Working).

CPDs

Participants holding any of the Project Management accreditations (CPPP/CPPM/CPPD) are eligible to earn **6 CPDs** for this short course.

On completion of this course, you will be awarded with a PM-Partners digital badge. These are widely accepted by leading organisations as recognition of specialist training and often shared on social media.

On the last day of training, you will be provided with a Digital Credential via the Credly Acclaim platform. This badge can be added directly to your LinkedIn profile and/or shared to your newsfeed, or other professional profile, to share your achievement with your network.

Why learn with PM-Partners?

Because we turn your career goals into reality.

Poor project skills are consistently quoted as a key reason for project failure. To be successful in project delivery, it's critical to invest in yourself and the capabilities of your team. This means setting clear goals and making a commitment to continuous improvement.

Certification and training is a vital part of this journey. But you need to know which foot to put forward, and when, to ensure you're heading in the right direction. That's where our expert guidance and support comes in.

Tell us where you want to go

At PM-Partners we start every conversation with the question, 'Where are you trying to go?' We then apply our expertise to show you exactly 'how' to get there.

We believe that having the relevant skills and methodologies is critical to delivery success, and ultimately career success. Depending on your aims, our team of professional development consultants will work closely with you to create a development pathway, or team training program, that aligns with your goals.

Helping to develop professional capabilities for 25 years

Our accredited programs provide certification and development across a range of globally recognised project management and delivery streams.

Each year, our expert facilitators train and certify more than 12,000 people throughout Australia, New Zealand and South-East Asia to best practice standards. All highly qualified practitioners in their field, they draw from real-life scenarios and their own experience to add real value for individuals, teams and organisations.

Our promise to you

PM-Partners is committed to providing industry leading education that is relevant, up-to-date and designed to meet your specific needs.

We offer qualifications in multiple disciplines, including key products in AXELOS' best practice portfolio, such as ITIL®, PRINCE2®, PRINCE2 Agile®, MSP®, MoP®, P3O® and P3M3®; APMG's AgilePM®, AgileBA®, AgilePgM™, Lean Six Sigma, Managing Benefits, Facilitation and Change Management; as well as the Scaled Agile Framework® (SAFe®); and Business Analysis programs from The Australian Chapter of the International Institute of Business Analysis™ (IIBA®), to name a few.

To find out more about how we can help you or your organisation uplift their capability, contact the experts on 1300 70 13 14.



Mike Boutel
Head of Training



Nektia Vamvoukakis
Corporate Training
Consultant



Jourdan Clark
Professional Development
Manager

Leading the way in training delivery

Our training facilities are equipped with the latest and most innovative technology to bring you the best learning experience.



CLASSROOM



VIRTUAL



ONLINE

Shop online with confidence



SECURE CHECKOUT
SATISFACTION GUARANTEED



CREDIT CARD

Amex, Visa, Mastercard



INVOICE



PURCHASE ORDER



BANK TRANSFER

*Please note: payment is due 14 days before course start date.

Buy now, pay later with interest-free terms

Pay just 50% of your course fee now and pay the other 50% 14 days before your course starts. Select invoice on checkout and one of our consultants will call you to arrange your payment plan.



Customer story

Listen to Dominic Cain speak about how he went from being a young Chef to a Programme Director.





PM-Partners have
been leaders in training and
professional certification for
over 20 years.

Our trainers are highly
qualified practitioners in their
chosen fields.

**SYDNEY OFFICE**

Level 5
45 Clarence Street
Sydney NSW 2000
Phone: 1300 70 13 14

MELBOURNE TRAINING CENTRE

Karstens
Level 9, 123 Queens Street
Melbourne VIC 3000
Phone: 1300 70 13 14

MELBOURNE OFFICE

Level 21
459 Collins Street
Melbourne VIC 3000
Phone: 1300 70 13 14

CANBERRA OFFICE

Level 4 & 5
15 Moore Street
Canberra City ACT 2601
Phone: 1300 70 13 14

BRISBANE OFFICE

Level 24
215 Adelaide St
Brisbane QLD 4000
Phone: 1300 70 13 14

SINGAPORE OFFICE

20 Bendemeer Road #03-12
Singapore 339914
Phone: +65 6818 5771

info@pm-partners.com.au | www.pm-partners.com.au

Share this course:



FACEBOOK



LINKEDIN

